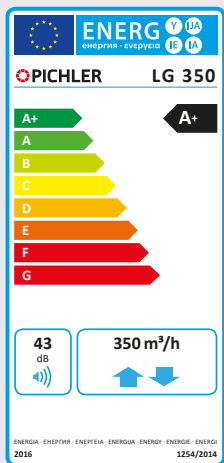


COMPACT VENTILATION UNIT LG 350/450



EU-Regulation
1253/2014



The specified energy efficiency is applicable when controlled to local requirements and is valid up to the specified maximum air flow volume.

**COMFORT
VENTILATION**



optional



Systematic ventilation.

Product description

The compact ventilation unit LG 350 and LG 450 comprise a compact thermally insulated EPP housing without thermal bridges, of galvanized sheet steel, externally powder-coated in RAL 9010. They have a highly efficient heat recovery system with an air/air counterflow heat exchanger made of recyclable plastic, with automatic 100%

bypass and energy-saving radial fans driven by the latest EC motor technology. The integrated air flow rate measurement guarantees balanced operation on the supply and extract air sides. The standard air filters used for outdoor air are of quality class F7 and for exhaust air of quality class G4. The operation is simple and intuitive via the MINI or

TOUCH (optional) control unit and with connection to the Internet (LAN connection) via the Pichler app. The optional expansion options for the CO₂ sensor module and the humidity sensor allow for demand-driven ventilation operation. The compact ventilation units LG 350 and LG 450 are suitable for floor or wall mounting in frost-free rooms.

Area of application

The compact ventilation unit LG 350 and LG 450 are used for the controlled mechanical supply and extract air ventilation of larger residential houses,

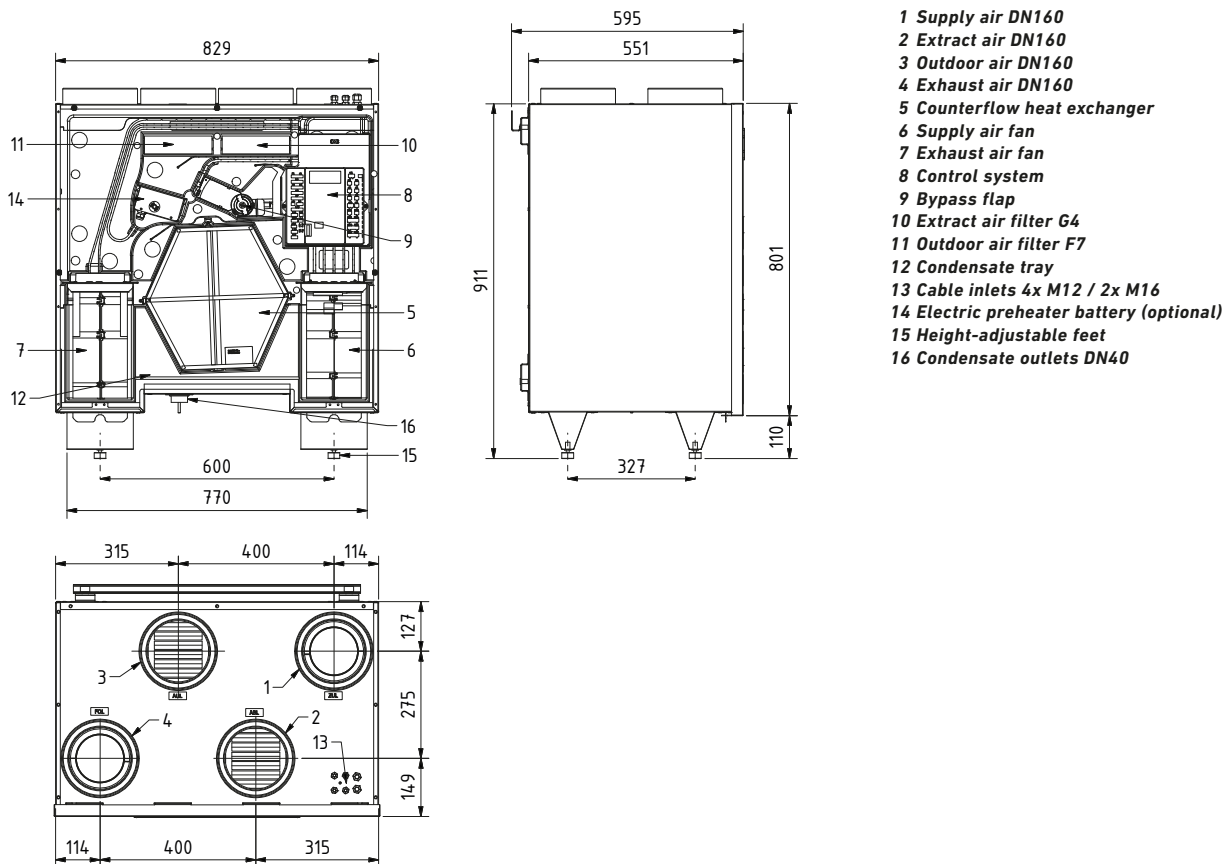
offices and similar applications. The range of use extends fundamentally to living spaces from approx. 100 m² to approx. 350 m² in passive or low

energy structures, with an adjustable air volume flow of up to 350 m³/h (LG 350) or 450 m³/h (LG 450).

Layout sketch (standing or wall-mounted installation)

Dimensions: (W x H x D) 829 x 950 x 550 mm

Air line connections: 4 x Ø 160 mm



Versions

The compact ventilation unit LG 350 and LG 450 are available in several different versions:

- Version with or without integrated electrical preheater battery
- Version with standard counterflow heat exchanger or enthalpy heat exchanger

Standing or wall-mounted	LG 350	LG 450
Item no. without an integrated electrical preheater battery	08LG350	08LG450
Item no. with integrated electrical preheater battery	08LG350V	08LG450V
Optionally with an enthalpy heat exchanger for moisture recovery	08LG350 + 08EWTLG500	08LG450 + 08EWTLG500

1 Supply air
2 Extract air
3 Outdoor air
4 Exhaust air
5 Filter revision

Technical specifications

COMPACT VENTILATION UNIT LG 350

Dimensions:

(B x H x T) 829 x 950 x 550 mm
 EPP-Housing with equipmental cladding coated in RAL 9010 powder coated,

Adjustable flow rate:

50 - 350 m³/h

Characteristics according to EN13141-7:2010:

Heat supply efficiency: $\eta_{\text{eff,L,HR}} = 90\%$

Power efficiency: $\eta_{\text{elec}} = 0,18 \text{ Wh/m}^3$

Air line connection:

4 x \varnothing 160 mm

Condensate connection:

\varnothing 40 mm bottom

Electrical connection:

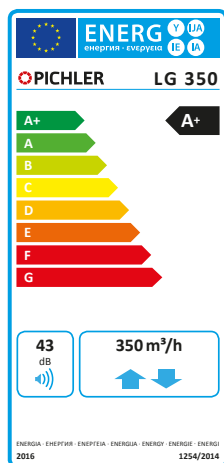
230 V/50 Hz/16 A

Protection class: IP 20

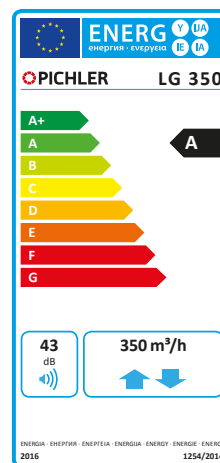
Permitted ambient temperature for the unit:

+ 5 °C bis + 40 °C

Weight without accessories: approx. 56 kg



Demand-driven (with humidity/CO₂ sensors)



Standard configuration

Specific energy consumption according to EU-regulation 1253/1254-2014 class A+ in combination with a controller for local demand. Class A in combination with manual, time or central demand control. Maximum Air flow volume: 350

m³/h; Sound power level LWA: 43 db(A); The rated energy efficiency class is valid up to the specified maximum airflow. The ventilation unit complies with the requirements of the Ecodesign Directive (EU Directive 1253/1254-2014) and is based on

the current state of knowledge - 7 July 2014. The detailed characteristics can be found in the product data sheet at www.pichlerluft.at.



COMPACT VENTILATION UNIT LG 450**Dimensions:**

(B x H x T) 829 x 950 x 550 mm

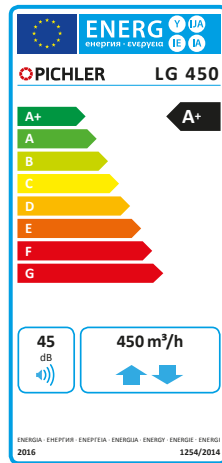
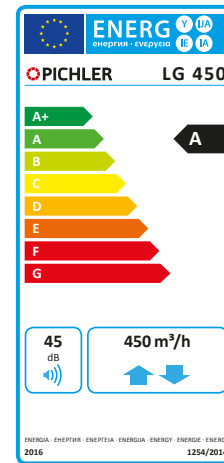
EPP-Housing with equipmental cladding coated in RAL 9010 powder coated,

Adjustable flow rate:50 - 450 m³/h**Characteristics according to EN13141-7:2010:**Heat supply efficiency: $\eta_{\text{eff,L,HR}} = 88\%$ Power efficiency: $\eta_{\text{elec}} = 0,22 \text{ Wh/m}^3$ **Air line connection:**4 x \varnothing 160 mm**Condensate connection:** \varnothing 40 mm bottom**Electrical connection:**

230 V/50 Hz/16 A

Protection class: IP 20**Permitted ambient temperature for the unit:**

+ 5 °C bis + 40 °C

Weight without accessories: approx. 56 kg**Demand-driven
(with humidity/CO₂ sensors)****Standard configuration**

Specific energy consumption according to EU-regulation 1253/1254-2014 class A+ in combination with a controller for local demand. Class A in combination with manual, time or central demand control. Maximum Air flow volume: 450

m³/h; Sound power level LWA: 45 db(A); The rated energy efficiency class is valid up to the specified maximum airflow. The ventilation unit complies with the requirements of the Ecodesign Directive (EU Directive 1253/1254-2014) and is based on

the current state of knowledge - 7 July 2014. The detailed characteristics can be found in the product data sheet at www.pichlerluft.at.

**ErP 2018**

Fulfils the requirements of the Ecodesign Directive, in accordance with EU Regulation 1253/2014.

Your partner/installer:



Responsible for the content: J. Pichler Gesellschaft m.b.H.
Archiv J. Pichler Gesellschaft m.b.H. | Text: J. Pichler Gesellschaft m.b.H.
All rights reserved | All photos are symbolic photos | Subject to change without notice | Version: 06/2018 db



J. PICHLER
Gesellschaft m.b.H.
office@pichlerluft.at
www.pichlerluft.at

ÖSTERREICH
9021 KLAGENFURT
AM WÖRTHERSEE
Karlweg 5
T +43 (0)463 32769
F +43 (0)463 37548

ÖSTERREICH
1100 WIEN
Doerenkampgasse 5
T +43 (0)1 6880988
F +43 (0)1 6880988-13

Sales offices in
Slovenia and Serbia.
Sales partners in
Germany, Switzerland
and Italy.